



**ILLINOIS  
CHAMBER**



**EMPLOYMENT LAW  
COUNCIL**

**STRONGER BUSINESS  
STRONGER ILLINOIS**

# EMPLOYMENT LAW COUNCIL

## THE STRONGEST WORKPLACE ADVOCATE FOR EMPLOYERS

Stifling and unfair regulation combined with a difficult political environment place undue burdens on business and threaten Illinois' economic well-being. High costs on business for workers' compensation, unemployment insurance, and workplace benefits make job creation and retention challenging. The Illinois Chamber's Employment Law Council is dedicated to helping you fight for your interests and against unwarranted government intrusion.

As an Illinois employer, you have a vested interest in keeping your employees safe, energized and productive. You believe in providing competitive wages and benefits. By becoming a member of the Employment Law Council, you will ensure the unique needs of your business and industry are addressed when policy is being debated in Springfield. Your expertise and insight will also be called upon to help contribute to the formation of more employer-friendly solutions in Illinois. The Employment Law Council is your earpiece and voice in the legislative and political arenas.

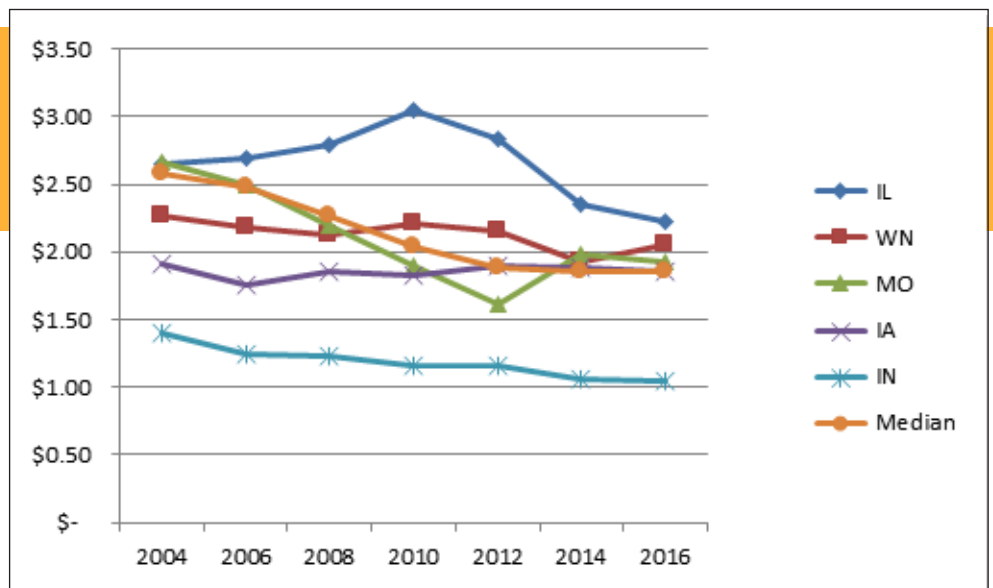
## GET INVOLVED IN THE EMPLOYMENT LAW COUNCIL

The Employment Law Council is the primary avenue by which Chamber companies provide input and guidance on human resource issues. It functions utilizing three standing committees: Workers' Compensation, Employment Law & Litigation and Unemployment Insurance. The Employment Law Council's experienced government affairs professionals initiate legislation advancing the ability for Illinois to be more competitive relative to costs for labor. It also responds to legislation that unjustly increases the cost of doing business in Illinois. The Employment Law Council keeps its members informed, allowing them to focus on when and where to get involved.

## WORKERS' COMPENSATION: HOW DOES OUR STATE COMPARE?

Illinois	IL
Wisconsin	WN
Missouri	MO
Iowa	IA
Indiana	IN
Median	

Source: Oregon Department of Consumer & Business Services "Workers' Compensation Rate Rank"



---

## EMPLOYMENT LAW COUNCIL MEMBER BENEFITS:

**NETWORKING WITH BUSINESSES** | The depth and breadth of the Employment Law Council continues to grow. Members are contacting each other developing business and government relations synergies they wouldn't otherwise have discovered. The Employment Law Council is the only "table" in the state that brings together the management voices on human resources issues.

**INPUT ON POLICY IN ILLINOIS** | Members of the Employment Law Council are leaders in their fields. They have a broader, vested interest in state policies. Its members are engaged in initiating and responding to the many legislative and regulatory issues that come up in Illinois. The Employment Law Council's Workers' Compensation, Employment Law & Litigation, and Unemployment Insurance Committees provide valuable venues for members to develop legislation, address regulations and provide input for strategies and tactics on key issues being considered in Springfield.

**EXPERTISE** | The Employment Law Council's experienced government affairs professionals initiate legislation advancing the ability for Illinois to be more competitive when it comes to labor costs. It responds to legislation that unjustly increases the cost of doing business in Illinois. The Employment Law Council informs its member via conference calls, meetings and newsletters offering multiple involvement opportunities

**ACCESS TO INSIDE INFORMATION** | When Employment Law Council members need answers to what is happening in Illinois regarding employment law issues, the staff has the answer. Its members also learn inside information and often are directly engaged in drafting and negotiation of key legislation and regulations. The Employment Law Council understands the who, the how and the why, providing its members a competitive edge when implementing new laws or regulations in the workplace.

**TRAINING OPPORTUNITIES** | Working with The Illinois Chamber of Commerce's Business Services, committee members are the pool of professionals the Illinois Chamber uses in providing the many HR services such as employment law handbooks, webinars, seminars and conferences. Members may expand their knowledge participating in the education opportunities or members may expand their market presence as the topic expert within these opportunities.

**COMMITTEE MEETINGS** | Members host committee meetings throughout the year. Doing so provides members opportunity to showcase their facilities and services. The Employment Law Council also provides teleconference meetings between our scheduled meetings as needed to timely address pending issues in Springfield.



**JAY SHATTUCK**

Jay serves as executive director of the Council, an organization that he founded in 1997. The Council brings together employers to improve and protect Illinois employment law and regulations to create a political climate conducive to the creation and retention of jobs in Illinois

## OTHER COUNCILS

---

**THE ENERGY COUNCIL** encourages the development and availability of all kinds of energy and conservation measures in an environmentally-responsible and cost-effective way. Illinois needs policies that promote the continued expansion of energy production in the state, allow for development of energy resources, and the development of infrastructure to meet the state's and nation's increasing energy demands.

**THE HEALTHCARE COUNCIL** develops and takes actions to achieve affordable, accessible, efficient, and high-quality healthcare for the employers and residents of our state. The council represents employers in seeking market-based approaches to help them provide affordable, quality healthcare coverage for their employees, and works closely with providers to help strengthen Illinois' healthcare system.

**THE INFRASTRUCTURE COUNCIL** focuses on public systems that are essential to Illinois business; roads and bridges, railways (freight and public transit), shipping via waterways and airports. The council is seeking new members to initiate efforts for water supply and treatment, utilities, pipelines, power generation, power distribution systems and communications networks. All of these systems impact the civic, social, and economic future of the people and employers of Illinois.

**THE INTERNATIONAL BUSINESS COUNCIL** focuses on building strategic partnerships to maximize the resources of the Illinois Chamber's members to expand in foreign markets and foster trade and investment in Illinois. The International Business Council's outreach includes Illinois businesses and a global network of local and foreign chambers of commerce, along with state and federal agencies and high-level political and diplomatic circles.

**THE TAX INSTITUTE** is an operating division of the Illinois Chamber of Commerce. The council's mission is to aggressively and pro-actively promote the interests of the Illinois business community by advocating pro-business tax policies at the federal, state, and local level that will enable Illinois businesses to grow and prosper.

**THE TECHNOLOGY AND INNOVATION COUNCIL** seeks to aggressively and proactively promote the interests of the Illinois technology community by advocating for public policy that fosters innovation and promotes economic growth. The council seeks to promote workforce development policies, advocate for world-class technology infrastructure, avoid overregulation on the industry and support innovators access to the capital they need to grow.

**WWW.ILCHAMBER.ORG**

**CAPITAL CITY**

215 East Adams Street  
Springfield, IL 62701  
217-522-5512

**CHICAGO**

70 West Madison, Suite 200  
Chicago, IL 60602  
312-983-7100